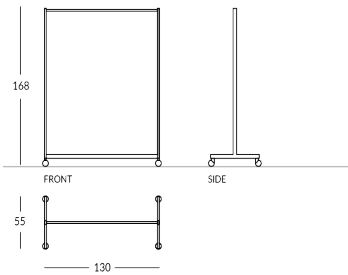


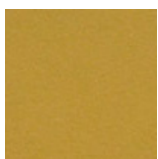
GIULIA-STN

Portemanteau au design linéaire. Structure rectangulaire en métal personnalisable avec peinture dans les couleurs Apir ou dans n'importe quelle teinte du nuancier de couleurs RAL. Quatre roues pivotantes à la base. Hauteur : 168 cm Largeur : 130 cm Profondeur : 55 cm Poids : 9,4 kg

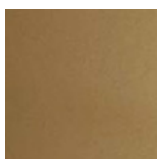
Versione



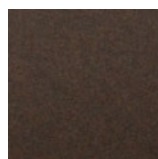
Finiture Verniciate | Painted finishes | Finitions peintes



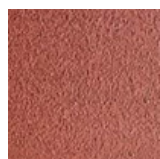
Or



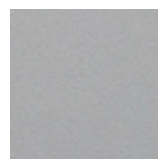
Or antique



Bronze



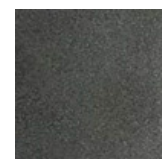
Simil Corten



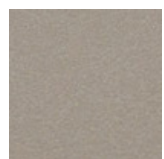
Silver



Tortora (Ral 1019)



Canna di Fucile



Antique Lumière

