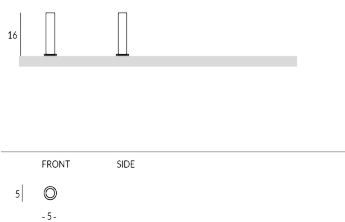


FLEUR

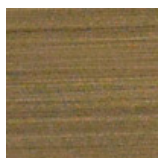
Porte-fleurs en laiton véritable. Finitions disponibles : métallique (laiton satiné ou bronzé clair) ou peinte dans les couleurs Apir ou dans n'importe quelle teinte du nuancier de couleurs RAL. Diamètre de base : 5 cm Hauteur : 16 cm



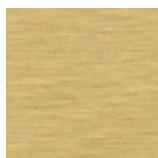
Versione



Finiture Metalliche | Metal finishes | Finitions métalliques

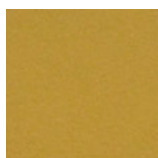


Laiton Bruni
Clair

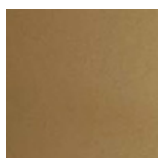


Laiton satiné

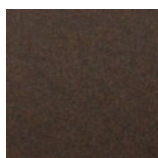
Finiture Verniciate | Painted finishes | Finitions peintes



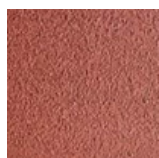
Or



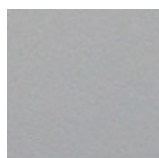
Or antique



Bronze



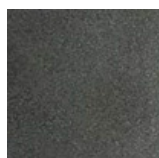
Simil Corten



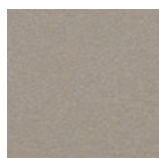
Silver



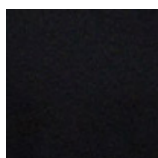
Tortora (Ral
1019)



Canna di
Fucile



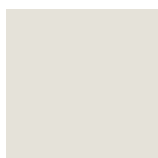
Antique Lumi
ère



Matt black
(Ral 9005)



Polished
black (Ral
9005)



Matt white
(Ral 9010)



Gris foncé
(Ral 7016)



Gris clair (Ral
7042)



Ral