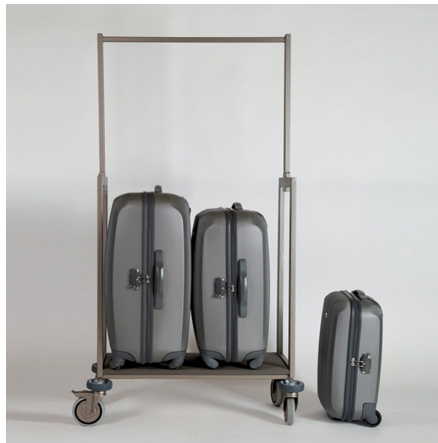
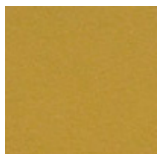


DUCCIO

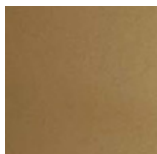
Chariot à bagages de petite taille, également adapté aux hôtels avec petits ascenseurs et d'espaces de manœuvre réduits. Structure rectangulaire en métal personnalisable avec peinture dans les couleurs Apir ou dans n'importe quelle teinte du nuancier de couleurs RAL. Plateau en bois aggloméré recouvert de tissu High-Tech, disponible en différentes couleurs. À la base, quatre roues pivotantes équipées d'un disque antichoc en caoutchouc rigide ; blocage sur deux roues. Hauteur : 175 cm Largeur : 51 cm Profondeur : 81 cm Poids : 21 kg



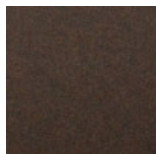
Finiture Verniciate | Painted finishes | Finitions peintes



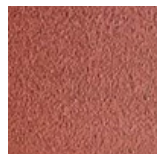
Or



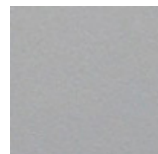
Or antique



Bronze



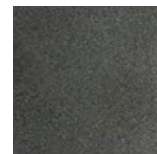
Simil Corten



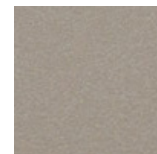
Silver



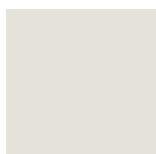
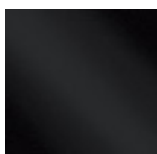
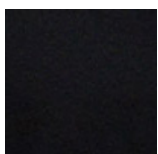
Tortora (Ral 1019)



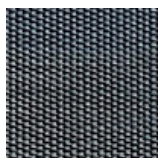
Canna di Fucile



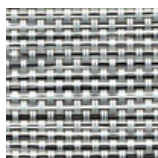
Antique Lumière



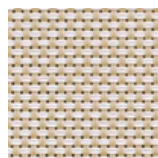
Fantasia Tessuto | Textile patterns | Tissu imprimé



Hi-Tech Grey



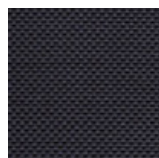
Hi-Tech Salt



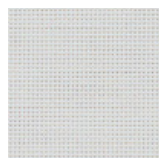
Hi-Tech Sand



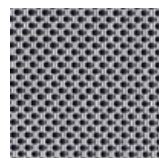
Hi-Tech
Safari



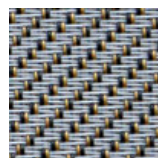
Hi-Tech Deep
Black



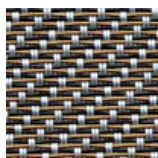
Hi-Tech White
Snow



Hi-Tech
Ipnotic Grey



Hi-Tech
Ethnic Silver



Hi-Tech
Ethnic Bronze