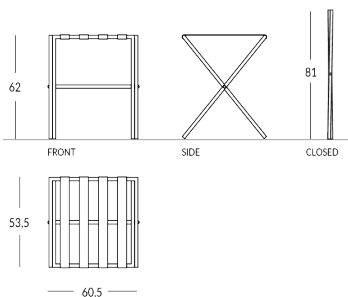


LUG

Porte-bagages pliant en métal. Matériau de la structure : métal avec profil rond. Matériau des sangles : tissu High-Tech disponible en différentes couleurs. Finition de la structure : métallique (acier ou cuivre) ou peinte dans les couleurs Apir ou dans n'importe quelle teinte du nuancier de couleurs RAL. Pieds en caoutchouc. Structure pliable pour minimiser l'encombrement. Hauteur ouverte : 62 cm Hauteur fermée : 81 cm Largeur : 60,5 cm Profondeur ouverte : 53,5 cm Poids : 3,3 kg



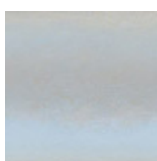
Versione



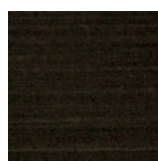
Finiture Metalliche | Metal finishes | Finitions métalliques



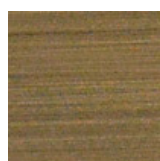
Acier industriel



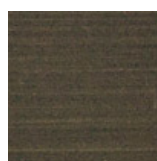
Acier poli



Laiton antique foncé



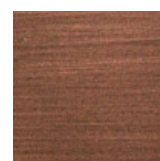
Laiton Bruni Clair



Laiton Bruni Foncé



Laiton poli

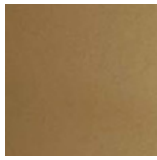


Cuivre Brossé Vieilli Mat

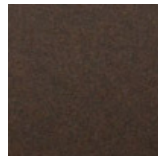
Finiture Verniciate | Painted finishes | Finitions peintes



Or



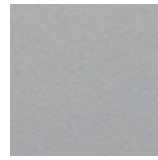
Or antique



Bronze



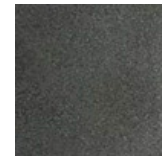
Simil Corten



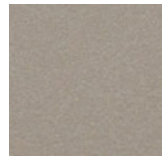
Silver



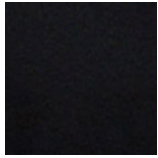
Tortora (Ral 1019)



Canna di Fucile



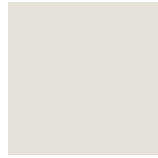
Antique Lumière



Matt black (Ral 9005)



Polished black (Ral 9005)



Matt white (Ral 9010)



Gris foncé (Ral 7016)



Gris clair (Ral 7042)

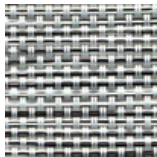


Ral

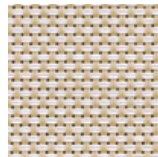
Colore Cinghie | Strap colour | Couleur de courroies



Hi-Tech Grey



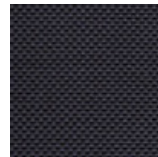
Hi-Tech Salt



Hi-Tech Sand



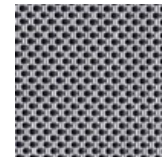
Hi-Tech Safari



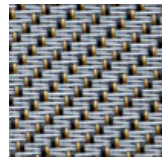
Hi-Tech Deep Black



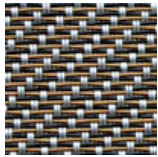
Hi-Tech White Snow



Hi-Tech Ipnotic Grey



Hi-Tech Ethnic Silver



Hi-Tech Ethnic Bronze