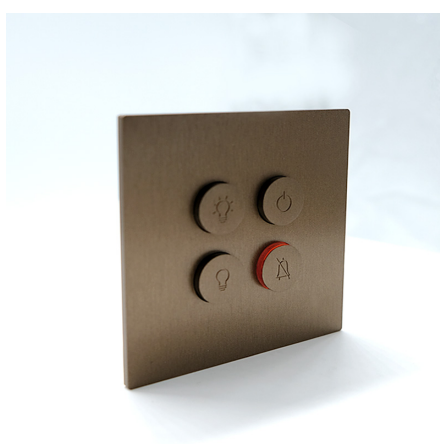
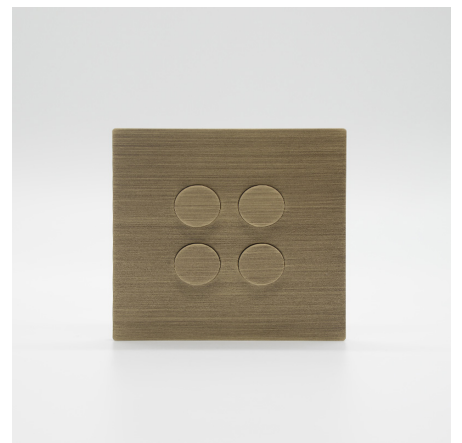
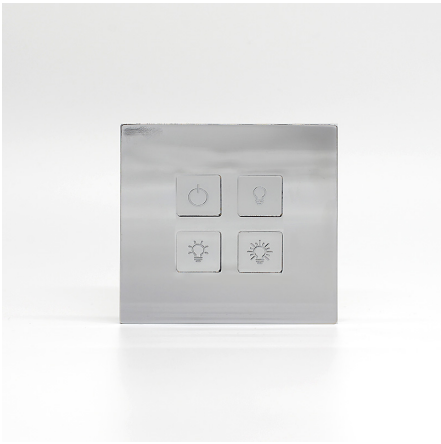
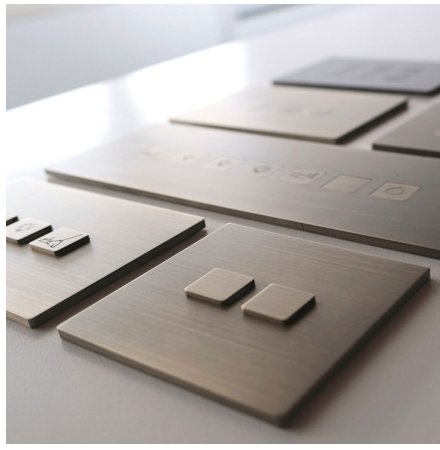
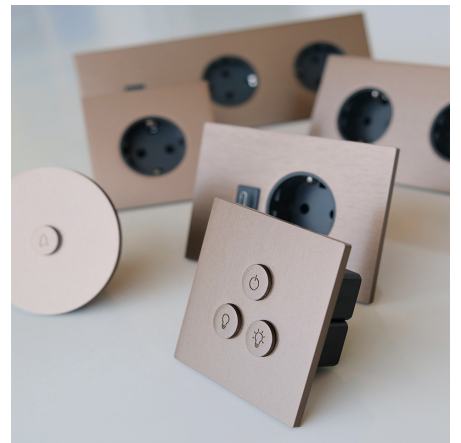
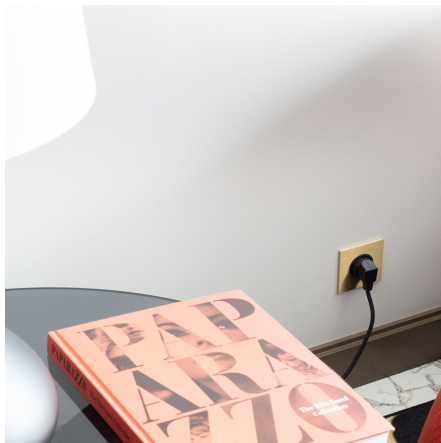
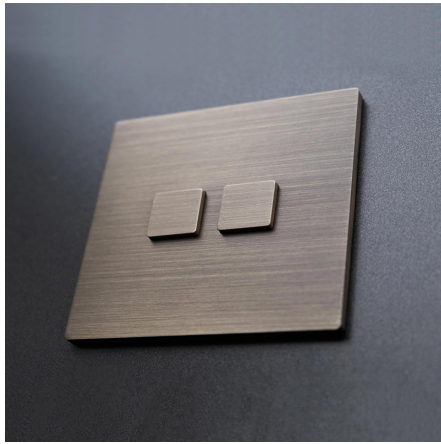


apir

SQUARE

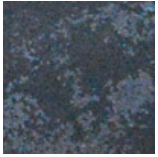




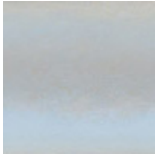




Finiture Metalliche | Metal finishes | Finitions métalliques



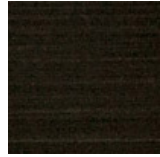
Acier industriel



Acier poli



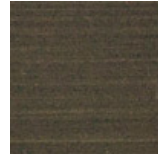
Acier brossé



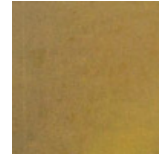
Laiton antique foncé



Laiton Bruni Clair



Laiton Bruni Foncé



Laiton industriel

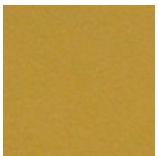


Laiton poli

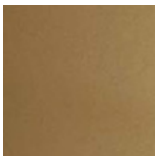


Laiton satiné

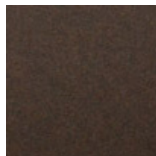
Finiture Verniciate | Painted finishes | Finitions peintes



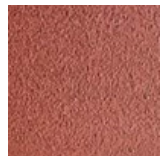
Or



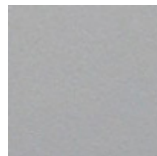
Or antique



Bronze



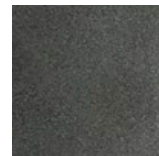
Simil Corten



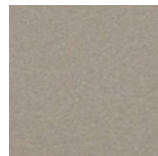
Silver



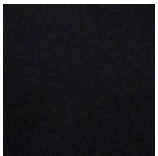
Tortora (Ral 1019)



Canna di Fucile



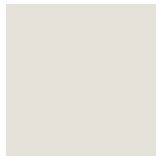
Antique Lumière



Matt black (Ral 9005)



Polished black (Ral 9005)



Matt white (Ral 9010)



Gris foncé (Ral 7016)



Gris clair (Ral 7042)

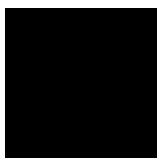


Ral

Optione Colore Incisione | option_colore_incisione | option_colore_incisione



Spécifier Ral



Ral 9005
(Noir Brillant)

Ral 9010
(Blanche
Brillant)